

# MONTHLY MEMBERSHIP PROGRESS REPORT

LOCATION CALIFORNIA

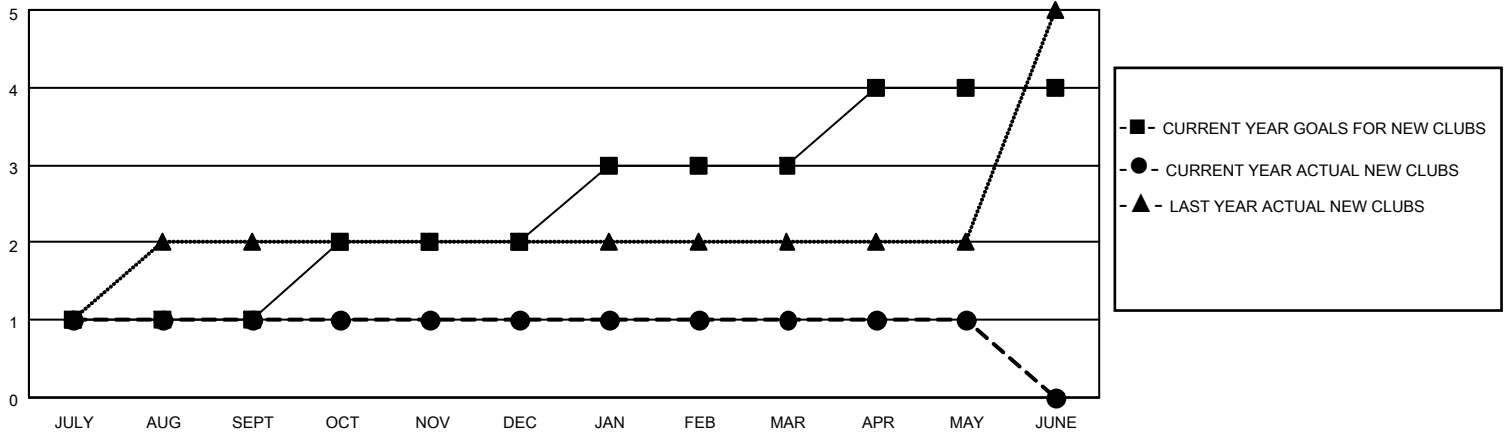
District 4 L6

Results as of: 5/31/2022

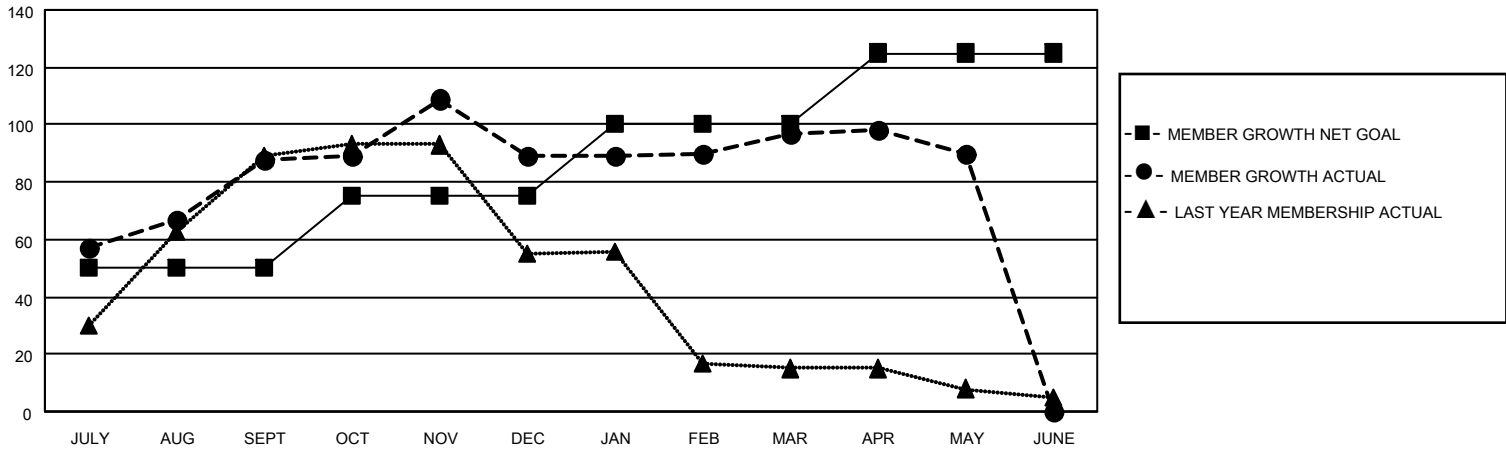
Clubs			
RESULTS FOR 2021-2022			
QUARTER	NEW CLUB GOAL	NEW CLUBS	DROPPED CLUBS
JULY/AUG/SEPT	1	1	1
OCT/NOV/DEC	1	0	2
JAN/FEB/MAR	1	0	0
APR/MAY/JUNE	1	0	0

Members			
RESULTS FOR 2021-2022			
QUARTER	MEMBER GROWTH NET GOAL	MEMBER GROWTH ACTUAL	DROPPED MEMBERS ACTUAL (including transfers)
JULY/AUG/SEPT	50	154	56
OCT/NOV/DEC	25	68	58
JAN/FEB/MAR	25	51	35
APR/MAY/JUNE	25	23	28

**GOALS AND ACTUAL NEW CLUBS CUMULATIVE**



**GOALS AND ACTUAL MEMBERS CUMULATIVE**



DROPPED CLUBS: 3	
<b>DROPPED MEMBERS</b>	
DECEASED	11
CLUB CANCELLED	6
OTHER	160
<b>TOTAL</b>	<b>177</b>

35 CLUBS OF 56 ADDED 1 OR MORE NEW MEMBERS

[CLICK HERE FOR CUMULATIVE MEMBERSHIP DATA](#)

<u>GENDER DISTRIBUTION</u>	
MALE	635 (48.03%)
FEMALE	686 (51.89%)
NON BINARY	0 (0.00%)
PREFER NOT TO ANSWER	1 (0.08%)
<hr/>	
TOTAL FAMILY UNIT MEMBERS	375
<hr/>	
FAMILY MEMBERS PAYING HALF DUES	214